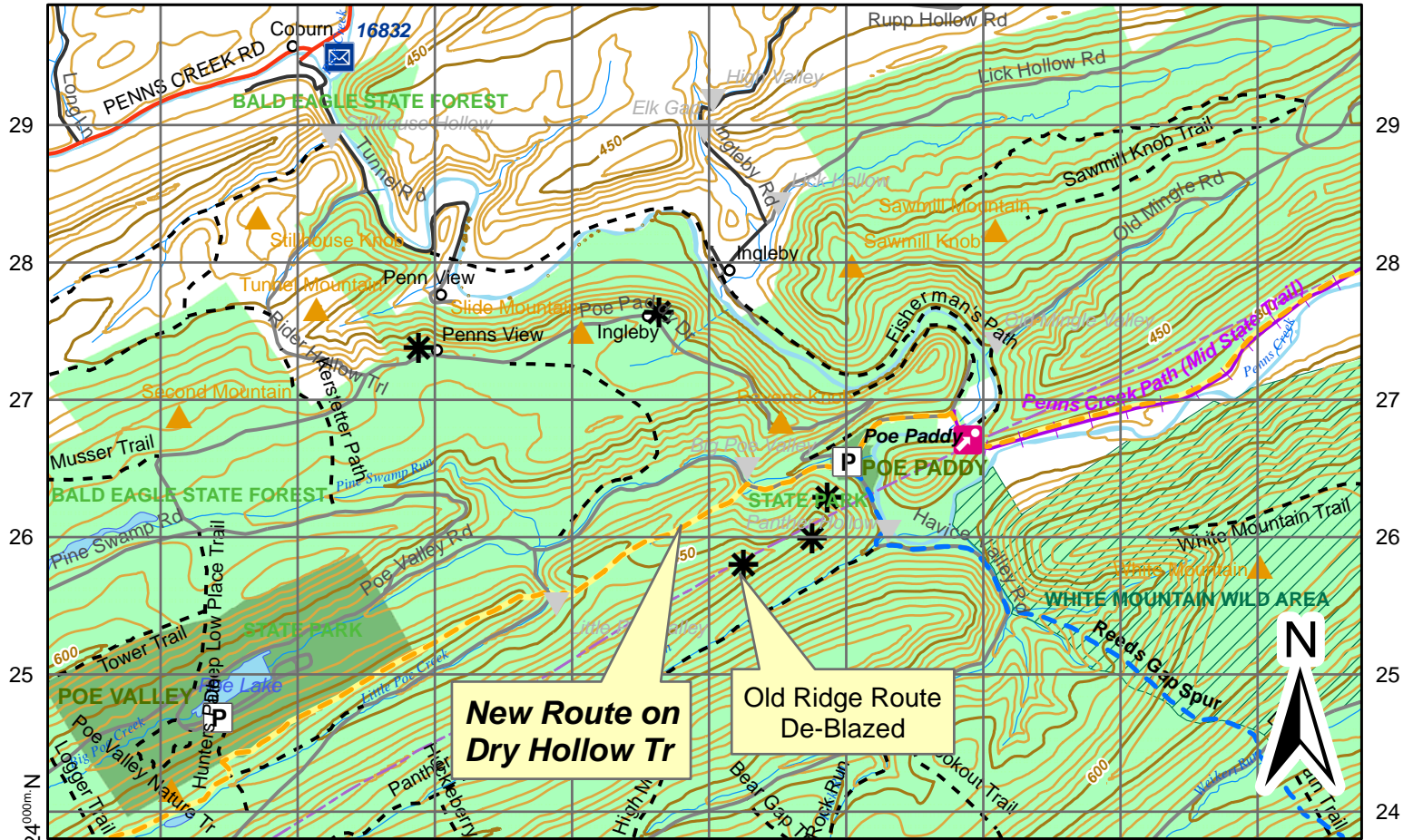


Mid State Trail - Dry Hollow Trail Reroute 2010

A Partial Revision to Maps 307-310 & 311-316, And 11th Edition Guide Section 10 between Poe Valley and Poe Paddy State Parks

97 98 99 00 01 02 03 04 05



0 0.45 0.9 1.8 2.7 3.6 Kilometers

1:50,000

NorthBound km	Features/Directions	SouthBound km
20.89	NB: MST continues ahead on Dry Hollow Trail. Reach trail junction and register at saddle on flank of Long Mountain. Sign in. SB: MST descends to Little Poe Creek.	Subtract 0.77 km rest of section 22.03
22.15	NB: Turn right on gravel Big Poe Road. SB: Turn left on Dry Hollow Trail.	20.77
22.95	NB: MST bears left on Poe Paddy Drive, crossing Big Poe Creek. It then bears right past one of the sites of the ghost town of Poe's Mills. Junction of Swift Run and Big Poe Roads with Poe Paddy Drive at edge of Poe Paddy State Park. Camping is available here at the usual state park fees. The blue blazed Reeds Gap Spur continues on Swift Run Road to Reeds Gap State Park in 22.3 km. SB: MST turns right on Big Poe Road.	19.97

Subtract 0.77 km rest of section